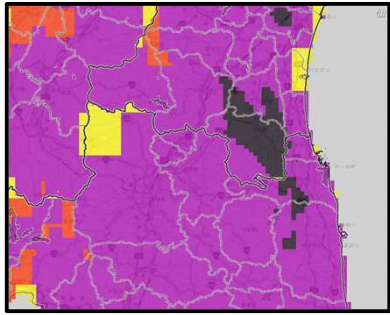


## Let's check Real-time risk map (KIKIKURU) !



KIKIKURU Screen

Check the current risk level  
Using **FIVE** color codes



The map shows possible risks.  
Scan to view



高	Emergency	Level 5	Evacuate by Level 4!
危険度	High Risk	Level 4	
	Warning	Level 3	
	Advisory	Level 2	
低	Early Advisory	Level 1	

### Important Information

Do not forget to share this with your family!

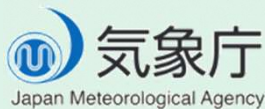
- Check hazardous areas near your home in advance using **hazard maps** or your **local government website**.
- When a disaster is expected, check updates using weather warnings and **KIKIKURU**. Follow your local government's **evacuation instructions** and take immediate action to stay safe.

Let's check disaster weather information on the Japan Meteorological Agency Website.



Scan for Website

Attention!



3-6-9 Toranomon, Minato City,  
Tokyo 105-8431, Japan  
TEL : 03-6758-3900  
FAX : 03-3434-9086 ( Accessible to people with hearing impairments )

Thanks to the **Nagasaki International Student Support Center** for their cooperation in translating this Japan Meteorological Agency leaflet into English.

# Staying Safe During Heavy Rain Disasters

~Using Weather Warnings for Disaster Preparedness~

## GUIDE BOOK

### Harerun Quiz !

Weather warnings are color-coded.  
Do you know which color tells everyone to evacuate immediately from dangerous areas?

①	②	③	④	⑤
しろ 白	き 黄	あか 赤	むらさき 紫	くろ 黒
White	Yellow	Red	Purple	Black



Harerun

(Japan Meteorological Agency Mascot)

Find the answer in this leaflet! ♪



# NATURAL DISASTERS AROUND US



# Let's Learn The 5 Alert Levels



Weather Warnings on flooding, heavy rain, landslides, and storm surges are shown by colors and levels to indicate the degree of danger.

## River Flooding

Areas to avoid: **Near rivers**



Flooding may cover buildings and roads with water.

## Heavy Rain

Areas to avoid: **Low-lying areas**



Places like underpasses and underground spaces may get flooded.

## Landslide

Areas to avoid: **Near mountains and cliffs**



Mountains and slopes may collapse, causing soil and sand to flow downward.

## Storm Surge

Areas to avoid: **Coastal areas**



When typhoons approach, sea levels may rise and water may flow onto land.

**How to evacuate**

- Move to a safe place before a disaster happens.

- If it is difficult to evacuate from your home,
  1. Landslides : Move to a room away from mountains and steep slopes.
  2. Flooding, heavy rain, or storm surge : Move to higher ground as much as possible.

To evacuate quickly, please check hazard maps in advance to understand where disasters may occur.



Check the hazard map here.

White



### Level 1: Early Advisory

Pay attention to upcoming information.



Yellow



### Level 2: Advisory

Talk with your family about the dangers of a warning and how to evacuate safely.



Red



### Level 3: Warning

People who take longer to evacuate (e.g., elderly) should start evacuating early.



Purple



### Level 4: Urgent Warning

A disaster could happen at any time. Evacuate immediately from dangerous areas.

Quiz!  
Answer  
④

Don't wait any longer, evacuate immediately

Black



### Level 5: Emergency Warning

Flooding or landslides may already be occurring. Evacuate immediately to any safer location.



Move away from slopes! Go to higher ground inside the building!